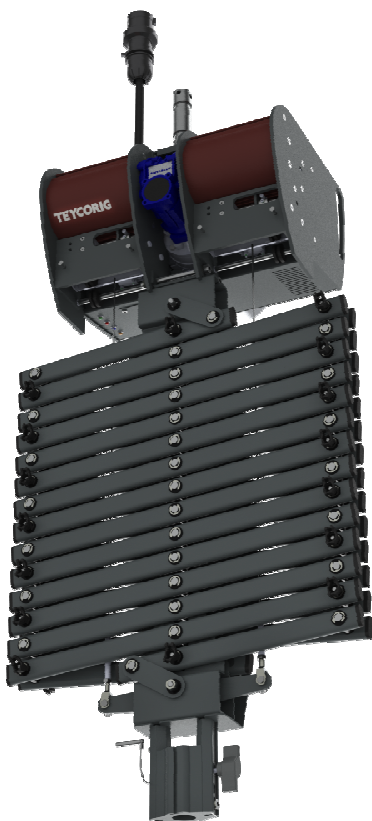


PE800X30 - Drop up to 3,4m lifting capacity 40Kg - 60/80Kg with top special bracket - 200/240Vac SP supply
PE800X40 - Drop up to 4,1m lifting capacity 40Kg - 60/80Kg with top special bracket - 200/240Vac SP supply
PE800X50 - Drop up to 5,3m lifting capacity 40Kg - 60/80Kg with top special bracket - 200/240Vac SP supply
PE800X60 - Drop up to 6,1m lifting capacity 40Kg - 60/80Kg with top special bracket - 200/240Vac SP supply
PE800X75 - Drop up to 7,6m lifting capacity 40Kg - 60/80Kg with top special bracket - 200/240Vac SP supply
PE800X85 - Drop up to 8,5m lifting capacity 40Kg - 60/80Kg with top special bracket - 200/240Vac SP supply

X-FLY80 Motorized pantographs are ideally suited for use in TV Studios, Theatre, Auditorium, and other application with ceilings up to 10 metres high. In combination with the FLY TRACK SYSTEM T8 and the relevant manual or motorized carriages it is the perfect solution to provide accurate positioning of lights. Supplied as standard with variable speed drive unit offer uncomparable soft up/down movement, no dynamic shock will influence the attached light or any other equipment you will need to lift. The in built LEDS Status monitor offer a clear understanding of different Pantograph status.



TEYCORIG are pleased to introduce the new X-FLY80 series of Motorized pantographs. Made in aluminium, our new pantographs cover drops of up to 8,5 metres and take up to 40 kilos of load as standard, and up to 60/80 kilos when used with a specially designed upper attachment accessory, (PA862).

Brand new, compact aluminium transmission group with integrate variable speed drive unit for soft start and soft stop.

Irreversible compact worm gear box with 0,25Kw motor.

Power supply input single phase from 200 to 240Vac, to make easy the supply of the unit using existing single phase power distribution, no needs to arrange a dedicated 3 phase power distribution.

New drum winding system, with accurate cable router to avoid rope cross winding, and additional user-adjustable mechanical end stop.

New color coded End stop group with cams adjustable top and bottom limit plus extra limits; adjustable overload device (factory preset); adjustable underload devices one for each rope (factory preset).

New aluminium pantograph arms, with a torsion-resistant oval-shaped profile and a stabilizing bushing pin assembly, guarantee exceptional stability and smooth movement.

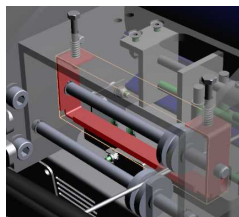
New stabilization system with double guides, made entirely from steel, with precision-engineered bushing pin assemblies.

New cable equalizer, made from steel, with self-stabilizing trapezoid profile.

New bottom bushing for lights attachment available standard (29mm) or universal (29mm plus 16mm male or female spigot or bushing, and anti-loosening knob devices.



Detail on adjustable overload devices



Detail on adjustable underload devices, (one for each ropes)



Detail on new color coded endstop group device with LEDS status Monitor, and unique and smart PUSH TO SET FUNCTION to make easy the end stops setup.



Optional Circuits are available on request 16/20/32A with CE/IEC309/UL-NEMA /DMX/ETH/Plugs and Sockets, single or double circuit plus DMX/ETH



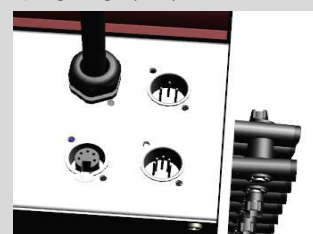
Designed to meet DIN/EN 15560/46 and BGVC1 standard



Detail on top gear group Front and Back side, with LEDS Status Monitor, Color Coded End Stop Group, Motor Inverter Unit, underload devices and scissor guide with 28mm standard spigot.



Detail for top special bracket (PA862) to be installed on request to get 60 (80Kg lifting capacity

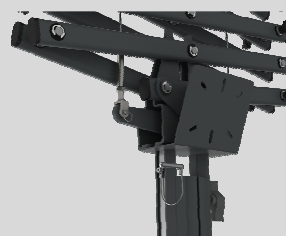


Detail for:

- Power input: 200/240Vac single phase+PE
- Control Input: 24Vdc on XLR3 connector
- PIN 1: +24Vdc max 50mA to remote ctrl.
- PIN 2: input Terminal 4 up/down
- PIN 3: input Terminal 5 up/down
- Conn. GND: GND to remote control
- Optional: DMX/RS485/CAN/ETH Dig. Ctrl.



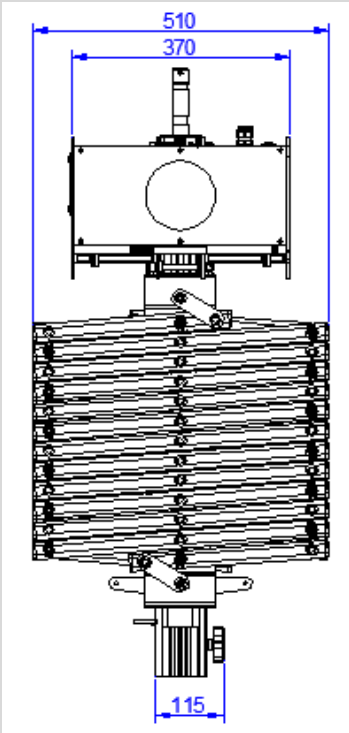
Detail on OPTIONAL PO Switch Cup for local or PO up/down operation (PA870)



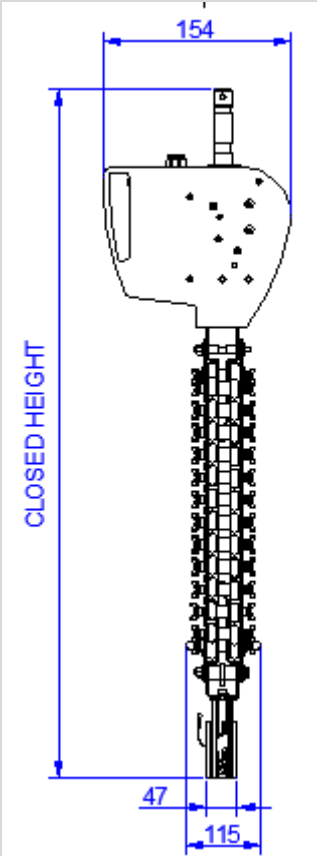
Deatilon on bottom scissors guide with ropes stabilizer device on trapezoid profile, socket plate with multi holes supplied as standard, bottom 29mm bushing available as standard or with universal 16/29mm bushing and 16mm spigot

Built according CE/UL regulation, and safety standards EN954.1 - EN 60439-1 CWA 15902- EN15560/46- BGV-C1

PE800 dimensional data



Front view



Side view



TOTAL DROP

X-FLY80 - Motorized pantograph - Specification data									
Pantograph Model	PE800X30	PE800X40	PE800X50	PE800X60	PE800X75	PE800X85			
Working Load Limit (WLL) Kg	40	40	40	40	40	40	40	60	8520
Working Load Limit with special top fixing (WLL) Kg	60	60	60	60	60	60	60	1270	510570
Total drop (B) mm	3420	4120	5320	6120	7680	8520	1270	510570	501115
Closed height (A) mm	870	930	1020	1080	1240	1270	154	370	318
Scissor width (mm) (netwith cable)	510570	510570	510570	510570	510570	510570	501115	154	370
Scissor depth (mm) (netwith cable)	501115	501115	501115	501115	501115	501115	501115	154	370
Pantograph gear group size (mm)	154	154	154	154	154	154	154	370	318
Pantograph gear group width (mm)	370	370	370	370	370	370	370	318	Remote or local P.O.
Self weight (Kg)	25.8	26.6	27.9	28.8	30.5	31.8	Remote or local P.O.	OPTIONAL	4.3
Drop adjustment	Remote or local P.O.	Remote or local P.O.	Remote or local P.O.	Remote or local P.O.	Remote or local P.O.	Remote or local P.O.	Remote or local P.O.	OPTIONAL	4.3
Local control cup P.O. for up/down operation (PA870)	OPTIONAL	OPTIONAL	OPTIONAL	OPTIONAL	OPTIONAL	OPTIONAL	OPTIONAL	OPTIONAL	4.3
Lifting speed (m/min)	4.3	4.3	4.3	4.3	4.3	4.3	4.3	4.3	10
Lifting steel ropes diameter (mm)	2x2.5mm	2x2.5mm	2x2.5mm	2x2.5mm	2x2.5mm	2x2.5mm	2x2.5mm	2x2.5mm	spigot 28mm (1-1/8")
Safety Factor	10	10	10	10	10	10	10	10	socket 28mm (1-1/8")
Standard top fixing	spigot 28mm (1-1/8")	spigot 28mm (1-1/8")	spigot 28mm (1-1/8")	spigot 28mm (1-1/8")	spigot 28mm (1-1/8")	spigot 28mm (1-1/8")	spigot 28mm (1-1/8")	spigot 28mm (1-1/8")	on request
Standard bottom fixing	socket 29mm (1-1/8")	socket 29mm (1-1/8")	socket 29mm (1-1/8")	socket 29mm (1-1/8")	socket 29mm (1-1/8")	socket 29mm (1-1/8")	socket 29mm (1-1/8")	socket 29mm (1-1/8")	on request
Special top/bottom fixing for LCD Mon/Speaker/Microphone/etc.	on request	on request	on request	on request	on request	on request	on request	on request	1/2 on request
Lighting circuits standard with 16/32A, cable 3x2.5/3x4mmq, with plug/std	1/2 on request	1/2 on request	1/2 on request	1/2 on request	1/2 on request	1/2 on request	1/2 on request	1/2 on request	worm 1.80
AUX Circuits - DMX/Ethernet/Audio/Video/etc.	on request	on request	on request	on request	on request	on request	on request	on request	1+1
Gear reducer Irreversible	worm 1.80	worm 1.80	worm 1.80	worm 1.80	worm 1.80	worm 1.80	worm 1.80	worm 1.80	0.25
Additional Mechanical brake - Top/Bottom	1+1	1+1	1+1	1+1	1+1	1+1	1+1	1+1	OPTIONAL
Motor Power (Kw)	0.25	0.25	0.25	0.25	0.25	0.25	0.25	0.25	200/240Vac
Motor Voltage input (CE - UL) 3 phase (Vac) 230/400-208 50/60 Hz Optional	OPTIONAL	OPTIONAL	OPTIONAL	OPTIONAL	OPTIONAL	OPTIONAL	OPTIONAL	OPTIONAL	24
Motor Voltage input (CE - UL) single phase (Vac) Standard with Inverter Unit	200/240Vac	200/240Vac	200/240Vac	200/240Vac	200/240Vac	200/240Vac	200/240Vac	200/240Vac	CAN-RS485-DMX-ETH
Motor control standard (Vdc)	24	24	24	24	24	24	24	24	1+1+1
Motor control optional	CAN-RS485-DMX-ETH	CAN-RS485-DMX-ETH	CAN-RS485-DMX-ETH	CAN-RS485-DMX-ETH	CAN-RS485-DMX-ETH	CAN-RS485-DMX-ETH	CAN-RS485-DMX-ETH	CAN-RS485-DMX-ETH	1
Motor in built thermal protections	1+1+1	1+1+1	1+1+1	1+1+1	1+1+1	1+1+1	1+1+1	1+1+1	1+1
Overload sensors	1	1	1	1	1	1	1	1	1+1
Underload sensors	1+1	1+1	1+1	1+1	1+1	1+1	1+1	1+1	1+1
Top/Bottom Limits	1+1	1+1	1+1	1+1	1+1	1+1	1+1	1+1	1+1
Top/Bottom Extra Limits	1+1	1+1	1+1	1+1	1+1	1+1	1+1	1+1	1+1
Inverter unit for soft start - soft stop - variable speed	STANDARD	STANDARD	STANDARD	STANDARD	STANDARD	STANDARD	STANDARD	STANDARD	STANDARD
Volume pkg m² - standard PE800 pkg dimensions for up to 8.5m(60x140x55)cm	0.4m²	0.4m²	0.4m²	0.4m²	0.4m²	0.4m²	0.4m²	0.46m²	0.46m²
Weight pkg (Kg)	34.3	35.1	36.4	37.3	40	41.3	41.3	41.3	41.3