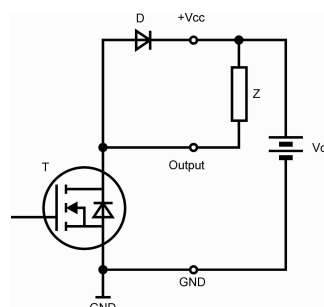


DTS16-F DIN DMX/SWITCH DEVICE

DMX DTS16-F allows controlling of most electrical devices (LEDs, halogen lamps, general DC lamps, motors, solenoids, etc.) from theatrical light desk via DMX line. Switching device is an N-MOSFET transistor with open collector.



- 16x Open collector output
- Optically isolated DMX input with parallel output
- Overvoltage protection of DMX line
- LED indication of DMX line
- DIP switch for DMX address setting



DMX input

USITT DMX 512 (1990)

Input is protected by transil diodes and polyswitches

DMX connector wiring: 1: DMX CMN, 2: DMX DATA-, 3: DMX DATA+

Switching output

16x open collector: **DC48V/6A**

Power supply

DC 12-36V, 160mA

AC 12-24V, 160mA

Temperature of use

-20...+60°C

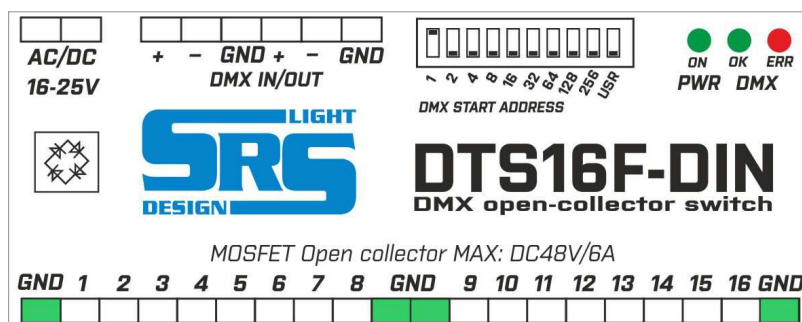
Weight

0.32 kg

Housing

Plastic DIN box 6 module

Control panel preview

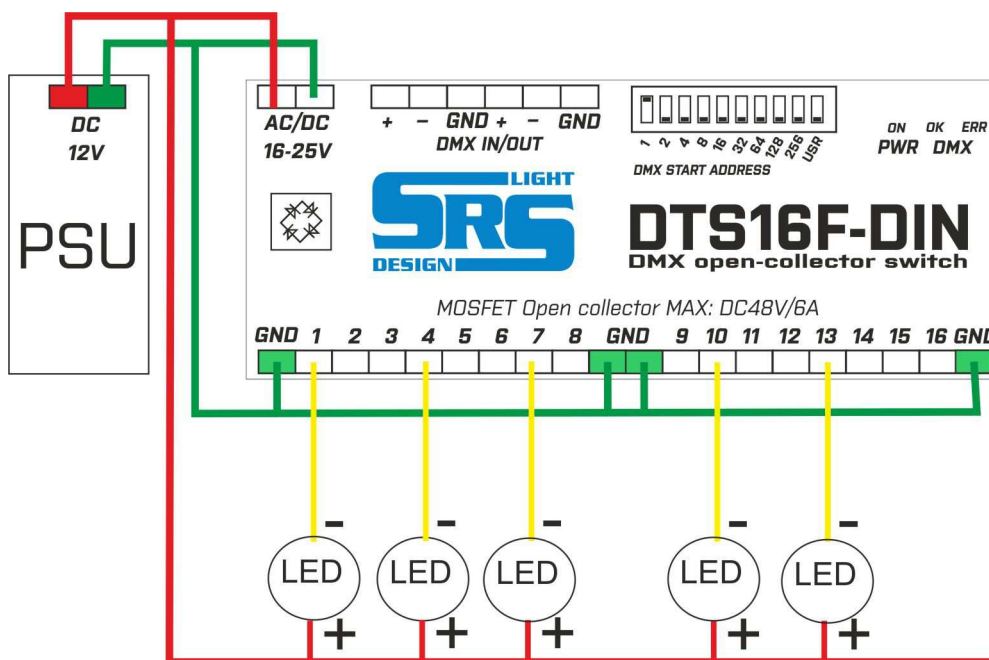


DIP switch functions:

1-9: DMX start address 1-512

10: USR used for DMX hold on/off

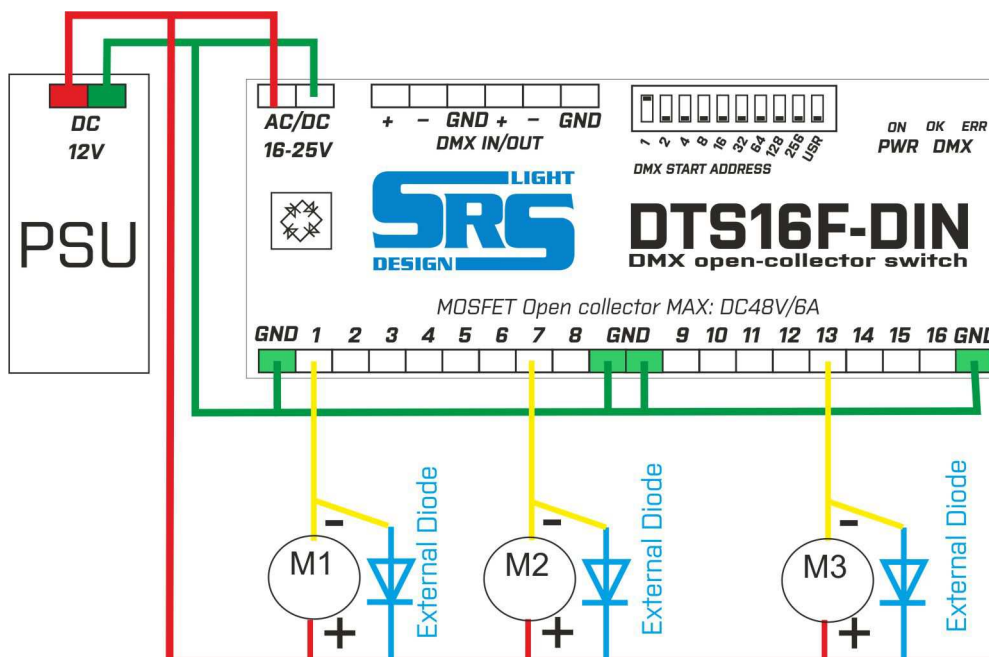
Wiring example 1: DTS16F-DIN is powering the DC12V LED strip



There is a 12V power supply with the output used for load connection of LED strips and DTS16-F DIN, on the picture. The "+" pole of the strip must be connected to the power supply and the "-" one to the DTS16F-DIN switching channel.

Switching from 0-100% is performed using 25 values on the DMX channel according to the DMX start address setting.

Wiring example 2: DTS16F-DIN is switching 12V motors with external diode



Unit is equipped with a boot loader. Special function for software is on request. In case of interest, contact the manufacturer at sales@srslight.com.